

TOPDON®



PulseQ AC Mini

Unlimited Power  
Unlimited Versatility  
Unlimited Potential

**E**MOBILITY

# Contents

*01*

Brief

*02*

Specs

*03*

Features

*04*

What's  
In The Box?

*05*

Comp Chart

*06*

FAQs

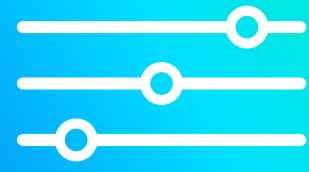




## PulseQ AC Mini

Meet the PulseQ AC Mini – your go-to solution for electric vehicle charging that seamlessly blends convenience, style, and efficiency. This innovative charging station offers easy installation, multiple tool models to choose from (Cable, Cable S, and Socket), and features a European Type 2 charging gun. Operating at 7kW, 230Vac, and 32A, the PulseQ Mini delivers both power and flexibility to meet your EV charging needs. With its sleek design, robust safety certifications (CB and CE), all-weather reliability, and cost-efficient installation, the PulseQ AC Mini stands as the ultimate choice for effortless and stylish EV charging. Elevate your electric vehicle charging experience with the PulseQ AC Mini from TOPDON.

Brief



# Specs

Specs

Features

What's In The Box?

Comp Chart

FAQs

## Functional Description

**Charging Mode:**

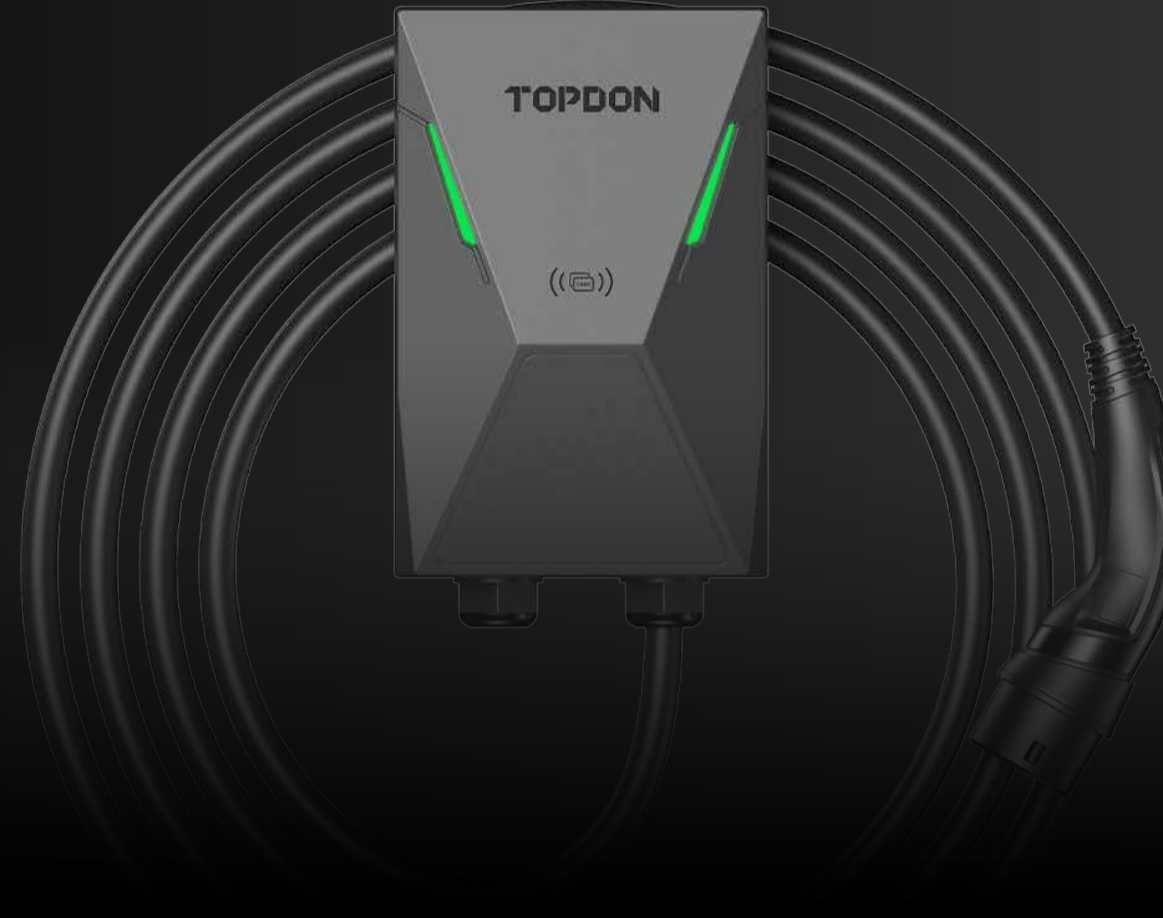
Plug-and-Play/RFID

**Indicator Lights:**

Charging status indicator

**RCD Built-in:**

$I_{\Delta dc}=6mA$



## Parameters

**Working Altitude:**

$\leq 2000m$

**Storage Temperature:**

$-40^{\circ}C \sim +80^{\circ}C$

**Operating Temperature:**

$-30^{\circ}C \sim +50^{\circ}C$

## Electrical Specifications

**Rated Voltage:**

$230V \pm 10\%$  , 50Hz

**Rated Current:**

32A 1-Phase

**Rated Power:**

7kW

**Charging Interface:**

IEC 62196-2, Type 2 charge connector



## Safety Protection

Surge protection, over temperature, over / under voltage, over current, LN reverse polarity, leakage, ground protection



Brief

## European EVs, Meet Your Match

The TOPDON PulseQ AC Mini, a dedicated Type 2 AC EV Charger tailored for European vehicles.

With a single-phase 230V input, 32A output, and 7kW power capacity, it's designed to provide fast and efficient charging for your electric vehicle.

Choose from three versatile versions – Cable, Cable S, and Socket, each catering to different user preferences and requirements.

Specs

**Features**

What's In  
The Box?

Comp Chart

FAQs





Brief

## Two Modes, One Focus: Efficiency And Safety

The PulseQ AC Mini offers two charging modes: Plug & Play for convenience and efficiency, with straightforward operation, and RFID Card Mode for enhanced control and secure charging services.

This dual-mode capability ensures your charging experience is both diverse and reliable.

Specs

**Features**

What's In The Box?

Comp Chart

FAQs





Brief

## Charge Your Way, Your Style

The PulseQ AC Mini's unique exterior design embodies the sleek lines of a sports car.

It's not just a practical AC EV Charger; it's your garage's touch of distinctive elegance.

What's more, we offer you the freedom to customize its color, allowing you to create a charging station that reflects your personal style.

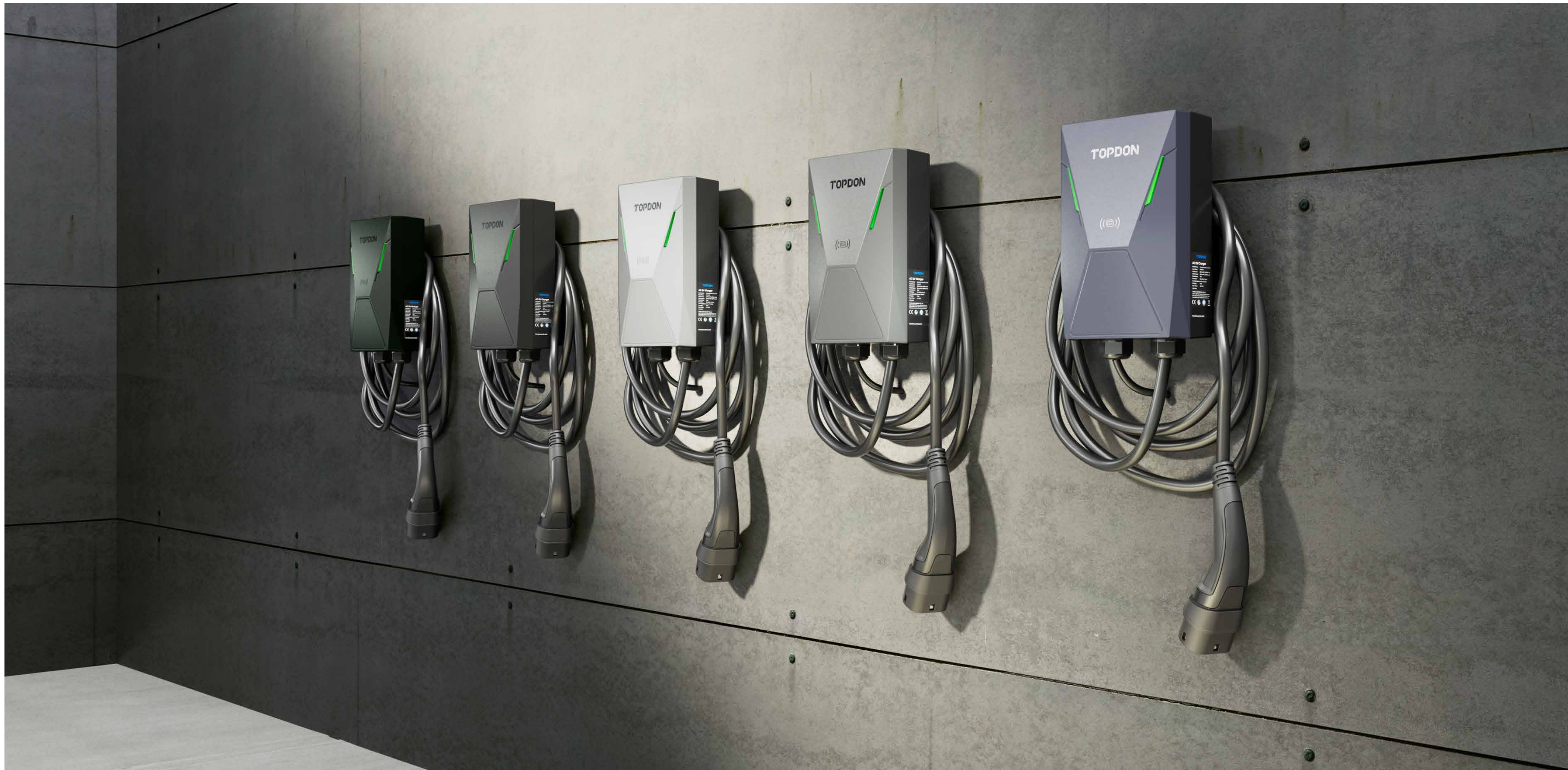
Specs

**Features**

What's In The Box?

Comp Chart

FAQs





Brief

## Effortless Setup With A Cable-Ready Back

Thanks to the PulseQ AC Mini's innovative design, professional electricians can easily and efficiently install it.

Just mount the plate on the wall, attach the charger, and say goodbye to cable clutter.

The PulseQ AC Mini's unique back design provides hassle-free cable management, ensuring a seamless and tidy charging experience in your garage.

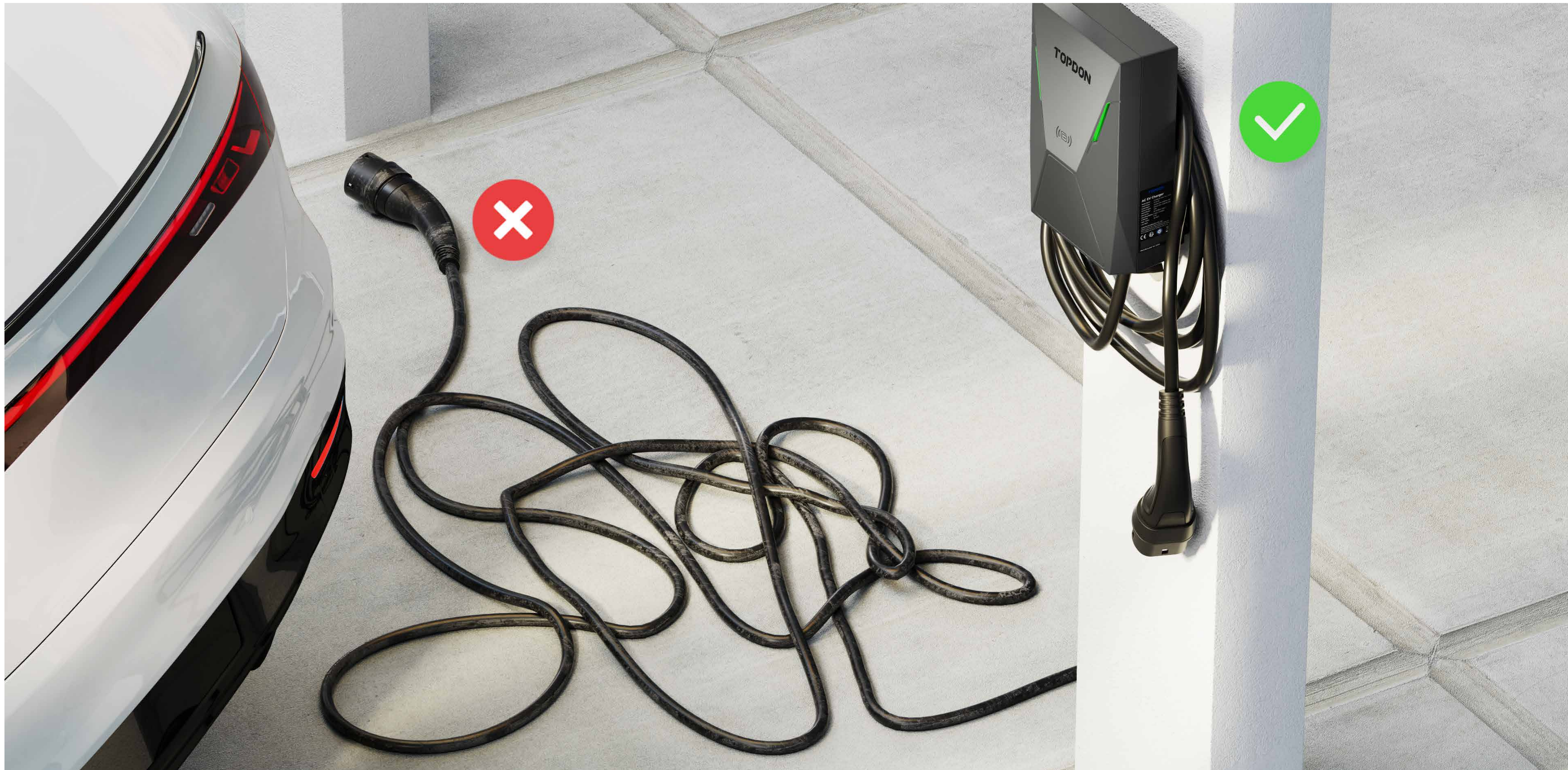
Specs

**Features**

What's In The Box?

Comp Chart

FAQs





Brief

## Certified Power: Your Trusted Charging Companion

The PulseQ AC Mini is certified with CE and CB, and guarantees top-tier quality and protection.

It holds IP65 and IK08 ratings, safeguarding against dust and water intrusion.

Additionally, its integrated DC 6mA safety protection functions as a robust security layer, enhancing your peace of mind.

Specs

**Features**

What's In  
The Box?

Comp Chart

FAQ





Brief

## Ready For Any Climate

The PulseQ AC Mini can perform in extreme weather, from a frosty  $-30^{\circ}\text{C}$  to a scorching  $50^{\circ}\text{C}$  – it's always up for the job.

The Mini can be stored in even more extreme temperatures, handling  $-40^{\circ}\text{C}$  to  $80^{\circ}\text{C}$ , so you can leave it be for as long as you like.

Wherever, whenever, the PulseQ AC Mini delivers a seamless, worry-free charging experience.

Specs

**Features**

What's In The Box?

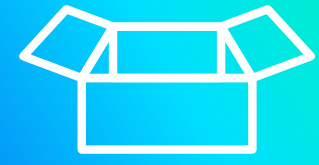
Comp Chart

FAQs





Brief



# What's In The Box?

Specs

PulseQ AC Mini



User Manual



Quality Certificate



Features

## What's In The Box?

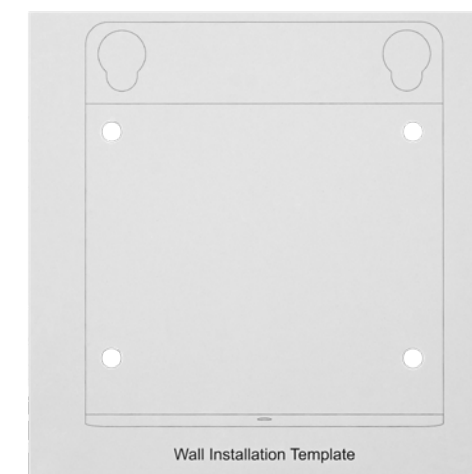
Charging Card



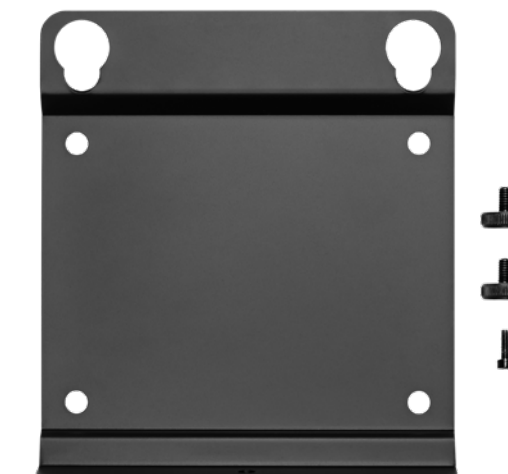
M5×40mm Expansion Bolts



Wall Installation Template



Wall-mounting Accessories





Hex Screwdriver



Comp Chart

FAQs



<p style="text-align: center;"><b>MODEL</b></p> <p style="text-align: center;"><b>SPECIFICATIONS</b></p>	<p style="text-align: center;">PulseQ AC Mini Charging Cable</p> 	<p style="text-align: center;">PulseQ AC Mini Charging Cable S</p> 	<p style="text-align: center;">PulseQ AC Mini Charging Socket</p> 
Connector	Type2 (IEC 62196-2)	Type2 (IEC 62196-2)	Type2 (IEC 62196-2)
Rated Voltage	230Vac ± 10%	230Vac ± 10%	230Vac ± 10%
Rated Current	32A	32A	32A
Charging Power	7kW	7kW	7kW
Rated Frequency	50Hz	50Hz	50Hz
Charging Modes	Plug and Play/RFID	Plug and Play/RFID	Plug and Play/RFID
RCD Built-In	DC6mA	DC6mA	DC6mA
Dimension	275*180*127mm	275*180*127mm	275*180*127mm
Net Weight	3.27kg (5m) / 4.15kg (7.5m)	3.29kg (5m) / 4.16kg (7m)	1.76kg
Protection Rate	IP65/IK08	IP65/IK08	IP54/IK08
Cable Length	5m (7mOptional)	5m (7mOptional)	/



Brief



# FAQs

Specs

## Question

What are the differences between the cable version and the socket version?

## Answer

Features

The cable version comes with a Type 2 (IEC 62196-2) connector, while the socket version does not. The socket version requires an external dual-head charger.

---

## Question

What's In  
The Box?

Is the dual-head charger included as standard with the product?

## Answer

No, it is not included. It can be purchased on the TOPDON website.

Comp Chart

FAQs



Brief



# FAQs

Specs

## Question

How many charging cards are included with the product as standard?

## Answer

Features

The product comes with 2 charging cards as standard, and additional cards can be purchased and added.

---

## Question

What's In  
The Box?

Is the power input line included as standard with the product?

## Answer

No, the power input line is not included. Users need to prepare it during installation.

Comp Chart

FAQs



Brief



# FAQs

Specs

## Question

How should the specification of the power input line be chosen?

## Answer

Features

The specification of the input line should be at least greater than 6mm<sup>2</sup>.

---

## Question

What's In  
The Box?

Is it possible to adjust the output power?

## Answer

No, adjusting the output power is not supported.

Comp Chart

FAQs



Brief



# FAQs

Specs

## Question

Is an external leakage protection device required during installation?

## Answer

Features

Yes, an external leakage protection device is required, with a specification greater than 40A.

What's In  
The Box?

Comp Chart

**FAQs**





    @topdonofficial

+86-755-21612590 (Global HQ)  
+1-833-629-4832 (North America)  
+34 697 733 280 (Europe)

sales@topdon.com  
support@topdon.com

**CHINA  
TOPDON HQ**

topdon.com

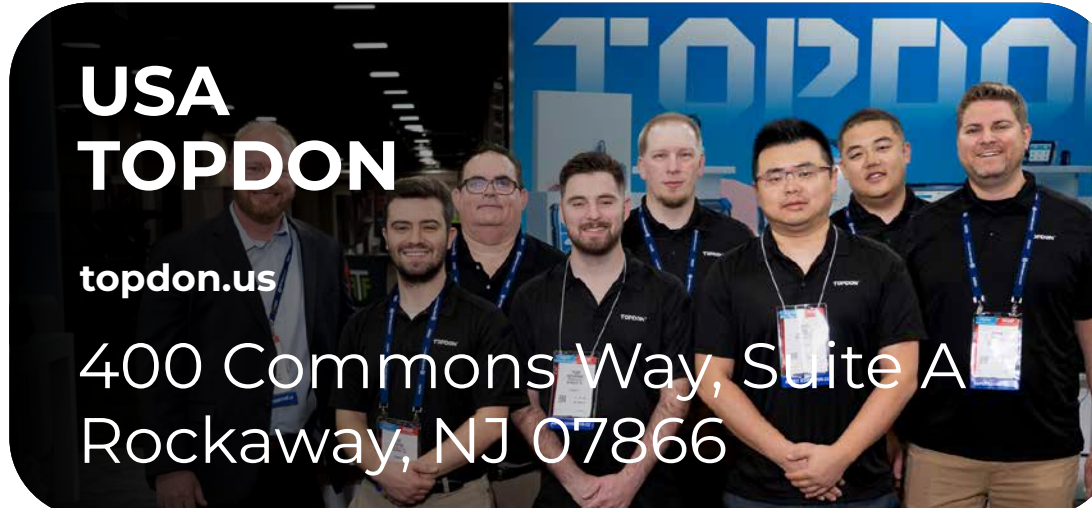
Unit 2005 20/F, No. 3040 Xinghai Avenue,  
Qianhai Shimao Tower, Qianhai Shenzhen-Hong Kong  
Cooperation Zone, Shenzhen, PR, China 518000



**USA  
TOPDON**

topdon.us

400 Commons Way, Suite A  
Rockaway, NJ 07866



**EU  
TOPDON**

eu.topdon.com

Barcelona Spain

