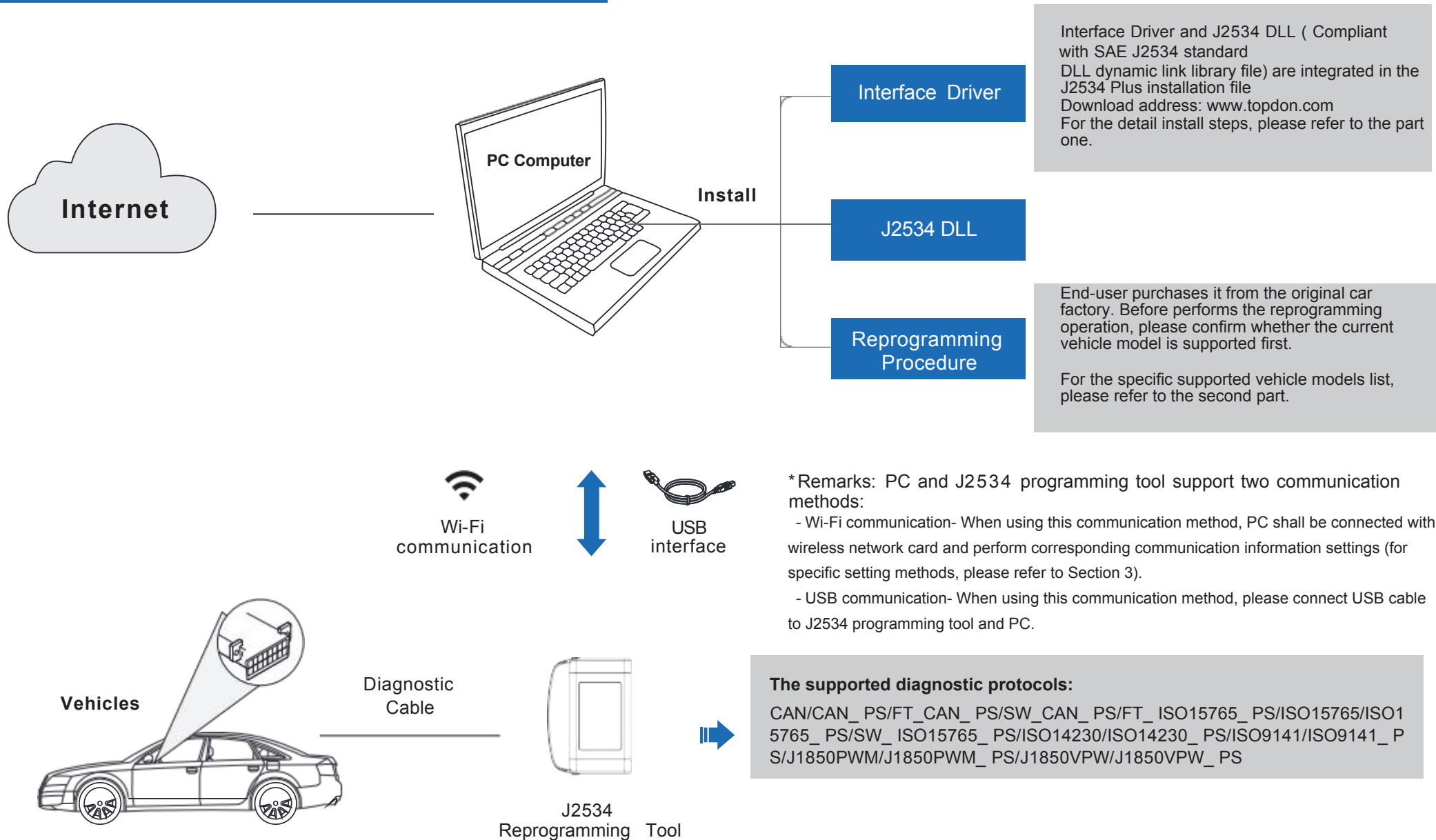
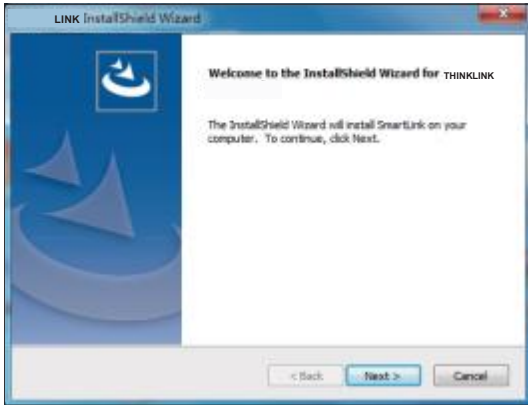


J2534 Plus Reprogramming Working Flow

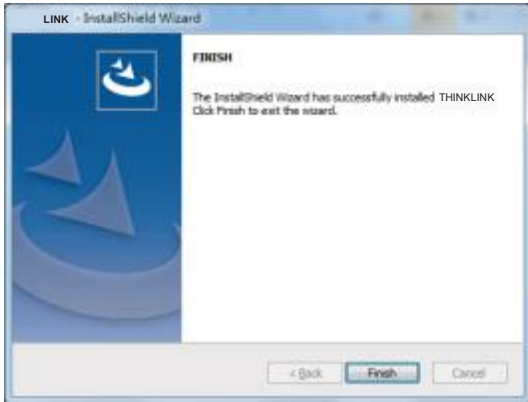


1.J2534 Plus Install

1. Visit www.topdon.com to download J2534 Plus tools.
2. After the download is complete, decompress the driver installation package. There are driver installation package compressed files and operation manuals in the compressed package.
3. Click J2534 Plus.exe in the compressed package, and click [Next] to start the installation.



4. Follow the screen prompts to install, until the following interface appears.



5. Click [Finish] to confirm the installation is complete. The Link icon will appear on the computer desktop accordingly.

The J2534 reprogramming operation can be performed then.

2. Supported Vehicles

The list of supported vehicle models mainly depends on whether the original software used by the user can support the J2534 protocol, and currently J2534 Plus has developed and supported diagnostic protocols. The following are for reference only. For details, please refer to the relevant official technical/after-sales related website of the vehicle.

Software Supported Vehicles	Software	Brand	Vehicle Model
	TIS(TOYOTA Techstream)	TOYOTA	Toyota, Lexus, Sean
	HDS(HONDA Diagnostic System)	HONDA	Honda, Acura
	Volvo VIDA	VOLVO	Volvo
	ODIS	VW	Imported Volkswagen, FAW-Volkswagen,Shang - hai Volkswagen, Audi, Seat,Skoda, Bentley, Lamborghini
	ISTA	BMW	BMW
	IDS/ FDRS	Ford	ford
	SUBARU SSM4	SUBARU	Subaru
	GDS2	GM	GM, Opel, Saab, Chevrolet, Cadillac
	WiTech 2.0	Chrysler	Chrysler
	Xentry	Benz	Benz
Supported Function	SDD	Land Rover/ JAGUAR	Land Rover, Jaguar
	Depends on the original software function		

3. Wi- Fi communication settings

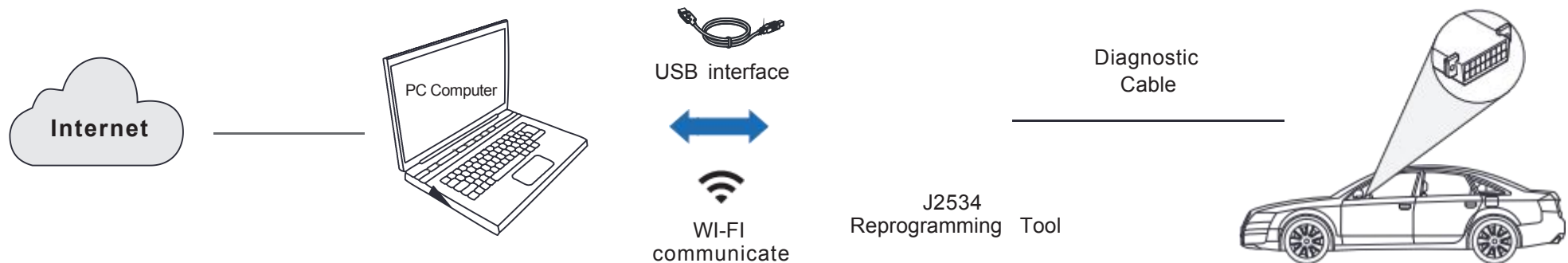
When using this communication method, the PC computer must be equipped with dual network cards, one USB external network card is connected to the J2534 programming tool hotspot network for communication, and the other (computer built-in) network card is used to connect the network to make the PC computer networked. The detail setting steps are as follows:

1. Insert the USB wireless network card into the computer USB interface, and then open the wireless network card that comes with the PC. Power on the VCI device, and the POWER indicator will light up.
2. Click the wireless network icon in the lower right corner of the Windows desktop, if there are two "WLAN" (Windows10 operating system, as shown in the picture below), or two "wireless network connection" (Windows7 operating system), it means that the dual network card is working normally .
3. Set the wireless network card (such as WLAN) that comes with the PC to connect to the Wi-Fi hotspot that can access the Internet.
4. Select another wireless network card (such as WLAN2) to connect to the Wi-Fi hotspot of the VCI device (the name of the Wi-Fi hotspot is product serial number 98XXXXXXXXXX, where "XXXXXXXX" represents 10 characters. The serial number can be found on the back of the device label). Enter the default password: 12345678.
5. After connecting to the Wi-Fi hotspot of the VCI device, the prompt message as shown below will appear.

4. Start Reprogramming

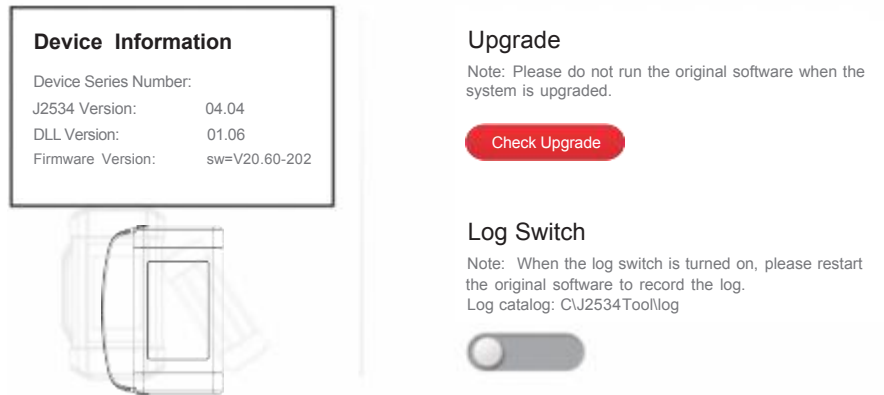
1. Connect and set up as shown in the picture below.
2. Run the original software on the PC.
3. If the selection of VCI device appears on the original software, please select [J2534 Plus] (if no need to select, please follow the screen prompts directly), and then follow the screen prompts to operate.

*Note: When used with the original diagnostic software, the VCI device can not only be used as a J2534 programming device, but also can be used as a VCI device. Users can read DTCs, clear DTCs, and read data streams.



5 .Upgrade

1. Connect the J2534 programming device to the PC.
2. Double-click to run the J2534 Plus on the desktop, and the following interface will pop up:



3. Click [Check Upgrade], the system starts to check whether there is an updated version. If there is an updated version, the system will automatically upgrade to the latest version.

*Note: Please do not run the original software when the system is upgraded.

4. If there is a problem during use, please turn on the [Log switch], and then restart the original software to record the log.